

**- LED PANELS SHOWN FOR REFERENCE ONLY -**



801 North East Street  
Suite 2A  
Frederick, MD 21701  
Tel: 800-546-4724  
Fax: 800-546-6175

Customer: RCI Custom Products		Project: 3Wx3H Absen Acclaim Plus Trim Kit		RCI Part Number: RCITK-ACCLAIMPLUS-SAMPLE		Drawn By: M.D.Melin		Date: 9/22/2022	
Material: 0.062 Aluminum		Finish: Black Matte Powdercoat		Art Spec:		Units: Inches		Revision: -	
								Sheet: 1 of 4	

**RCI CUSTOM PROPRIETARY STATEMENT**

The information contained herein is proprietary to Cervant, Inc. dba RCI Custom Products. It is to be used by the recipient solely for the purpose of the contractual performance for which it is furnished, and shall not be disclosed, in whole or in part, to any other party without the express written consent of Cervant, Inc. dba RCI Custom Products. All product and company names are trademarks™ or registered® trademarks of their respective holders. Use of them does not imply any affiliation with or endorsement by them.

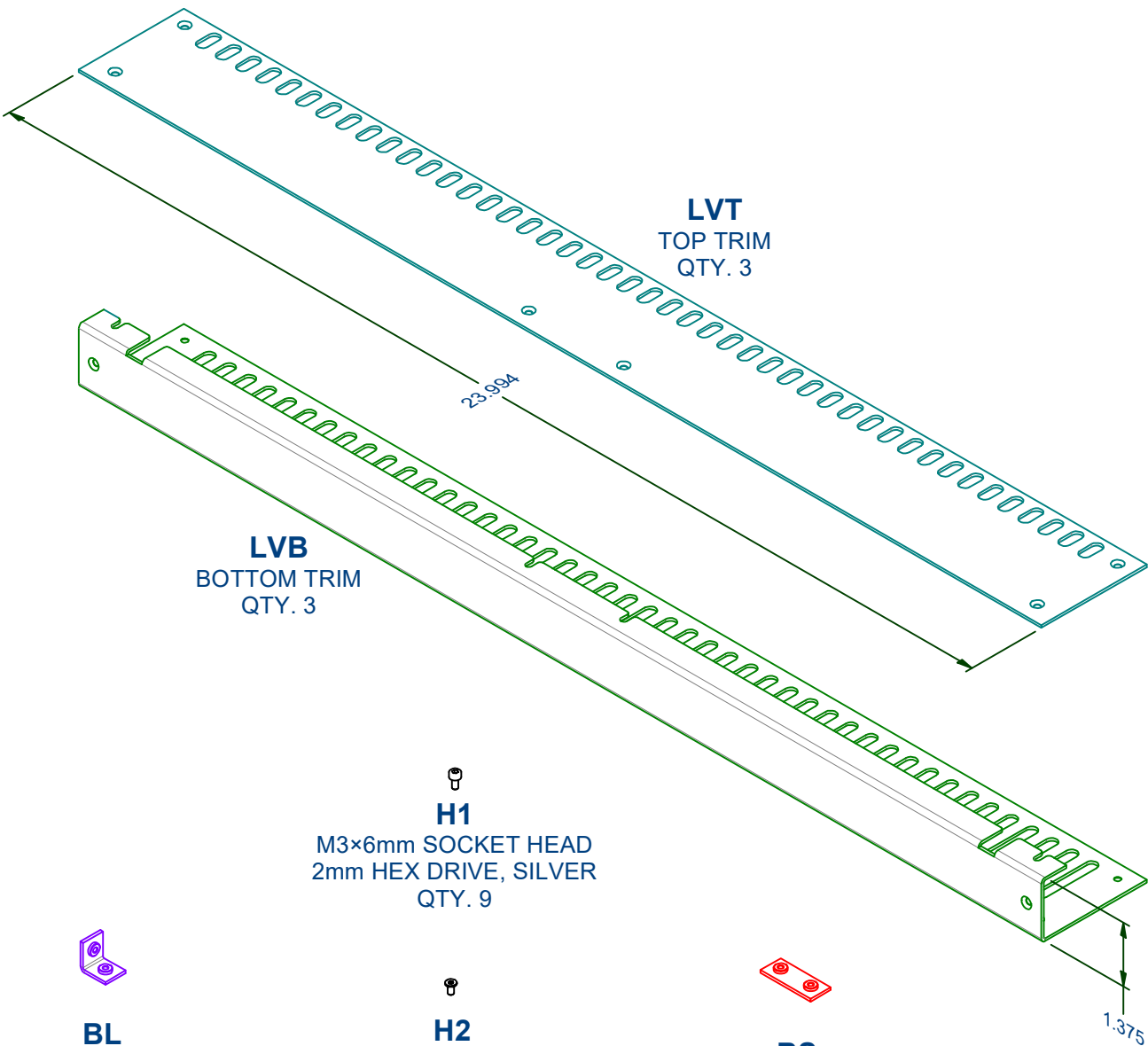
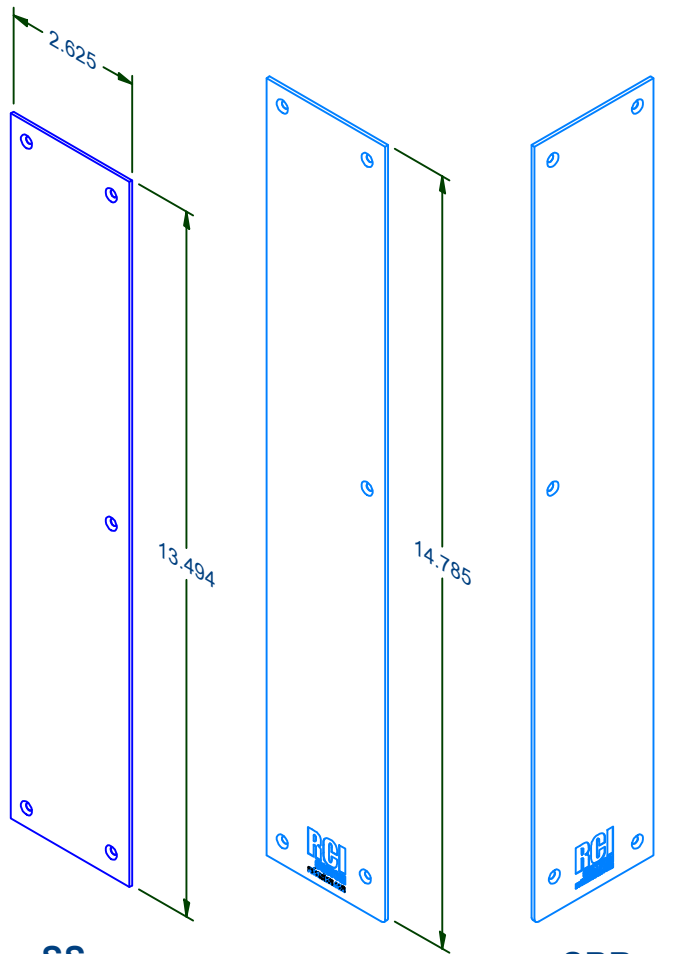
**RCI CUSTOM DESIGN APPROVAL STATEMENT**

By signing, I agree that the design of any Panels, Parts or Artwork, digital or otherwise, has been thoroughly reviewed and approved, and I grant permission to proceed with the production process and accept responsibility for the same. It is understood that all proof reading and spell checking is the responsibility of the customer, not that of RCI Custom Products. It is understood that printed product colors may vary from what I see on my computer screen or print from my computer. I understand that a first article may be ordered at additional cost at my request. I understand that revisions, error corrections and/or preference changes after this approval will be deemed "new work" and invoiced in addition to this project's fees.

**DESIGN APPROVAL** (Please sign below and return)



By Signing you have approved the Panel and Parts as shown and Agree to RCI Terms and Conditions as posted on this document and at [www.rcicustom.com](http://www.rcicustom.com).



**SS**  
SIDE TRIM  
QTY. 4

**SBL**  
BOTTOM LEFT  
SIDE TRIM  
QTY. 1

**SBR**  
BOTTOM RIGHT  
SIDE TRIM  
QTY. 1

**LVB**  
BOTTOM TRIM  
QTY. 3

**LVT**  
TOP TRIM  
QTY. 3



**BL**  
CORNER  
L-BRACKET  
QTY. 6



**H1**  
M3×6mm SOCKET HEAD  
2mm HEX DRIVE, SILVER  
QTY. 9



**H2**  
M3×6mm FLAT HEAD  
2mm HEX DRIVE, BLACK  
QTY. 57



**BS**  
SPLICE BRACKET  
QTY. 10



801 North East Street  
Suite 2A  
Frederick, MD 21701  
Tel: 800-546-4724  
Fax: 800-546-6175

Customer: RCI Custom Products		Project: 3W×3H Absen Acclaim Plus Trim Kit		RCI Part Number: RCITK-ACCLAIMPLUS-SAMPLE	Drawn By: M.D.Melin	Date: 9/22/2022
Material: 0.062 Aluminum	Finish: Black Matte Powdercoat	Art Spec:		Units: Inches	Revision: -	Sheet: 2 of 4

**RCI CUSTOM PROPRIETARY STATEMENT**  
The information contained herein is proprietary to Cervant, Inc. dba RCI Custom Products. It is to be used by the recipient solely for the purpose of the contractual performance for which it is furnished, and shall not be disclosed, in whole or in part, to any other party without the express written consent of Cervant, Inc. dba RCI Custom Products. All product and company names are trademarks™ or registered® trademarks of their respective holders. Use of them does not imply any affiliation with or endorsement by them.

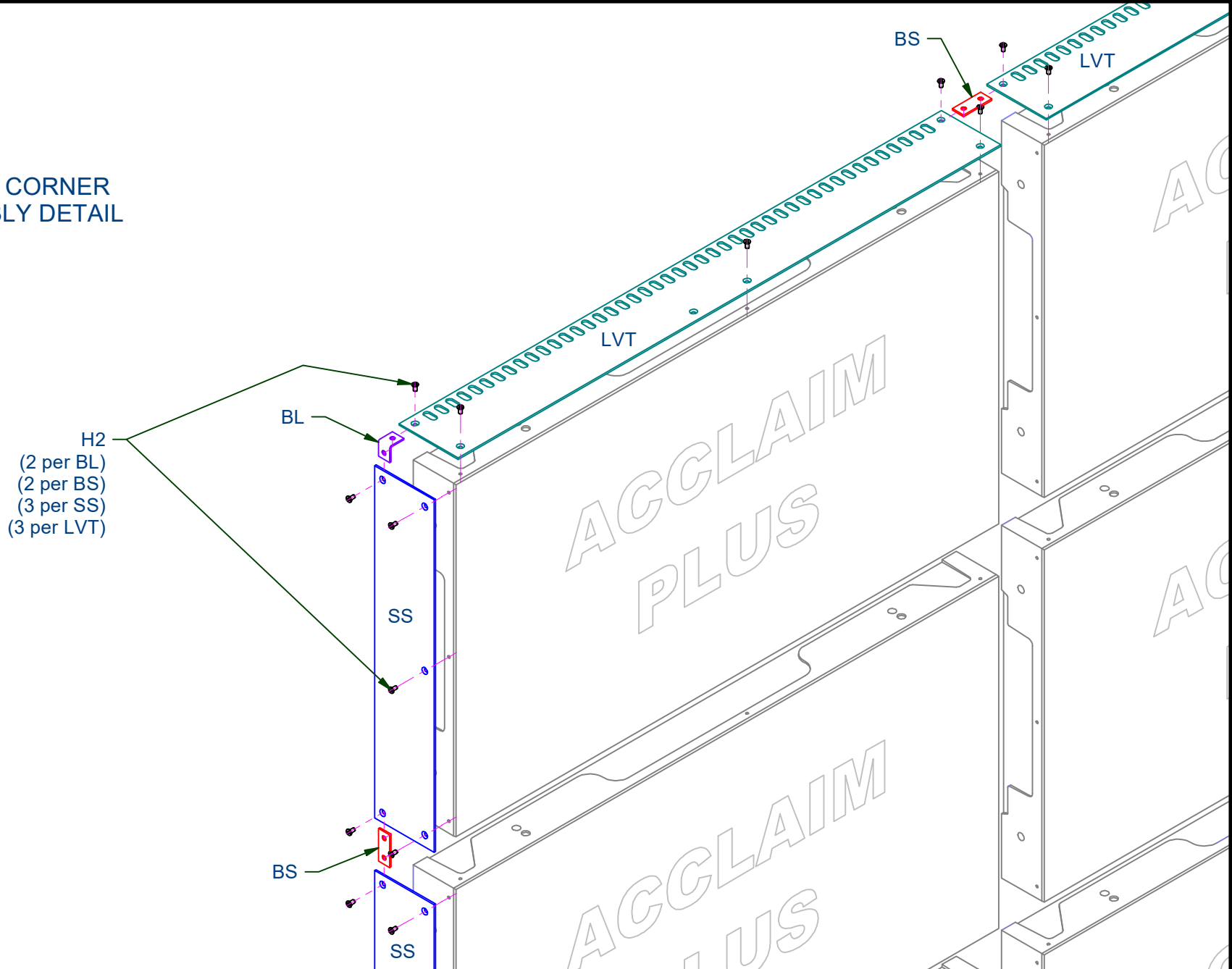
**RCI CUSTOM DESIGN APPROVAL STATEMENT**  
By signing, I agree that the design of any Panels, Parts or Artwork, digital or otherwise, has been thoroughly reviewed and approved, and I grant permission to proceed with the production process and accept responsibility for the same. It is understood that all proof reading and spell checking is the responsibility of the customer, not that of RCI Custom Products. It is understood that printed product colors may vary from what I see on my computer screen or print from my computer. I understand that a first article may be ordered at additional cost at my request. I understand that revisions, error corrections and/or preference changes after this approval will be deemed "new work" and invoiced in addition to this project's fees.

**DESIGN APPROVAL** (Please sign below and return)



By Signing you have approved the Panel and Parts as shown and Agree to RCI Terms and Conditions as posted on this document and at [www.rcicustom.com](http://www.rcicustom.com).

# UPPER CORNER ASSEMBLY DETAIL



801 North East Street  
 Suite 2A  
 Frederick, MD 21701  
 Tel: 800-546-4724  
 Fax: 800-546-6175

Customer: RCI Custom Products		Project: 3W×3H Absen Acclaim Plus Trim Kit	
Material: 0.062 Aluminum	Finish: Black Matte Powdercoat	Art Spec:	

RCI Part Number: RCITK-ACCLAIMPLUS-SAMPLE	Drawn By: M.D.Melin	Date: 9/22/2022
Units: Inches	Revision: -	Sheet: 3 of 4

**RCI CUSTOM PROPRIETARY STATEMENT**  
 The information contained herein is proprietary to Cervant, Inc. dba RCI Custom Products. It is to be used by the recipient solely for the purpose of the contractual performance for which it is furnished, and shall not be disclosed, in whole or in part, to any other party without the express written consent of Cervant, Inc. dba RCI Custom Products. All product and company names are trademarks™ or registered® trademarks of their respective holders. Use of them does not imply any affiliation with or endorsement by them.

**RCI CUSTOM DESIGN APPROVAL STATEMENT**  
 By signing, I agree that the design of any Panels, Parts or Artwork, digital or otherwise, has been thoroughly reviewed and approved, and I grant permission to proceed with the production process and accept responsibility for the same. It is understood that all proof reading and spell checking is the responsibility of the customer, not that of RCI Custom Products. It is understood that printed product colors may vary from what I see on my computer screen or print from my computer. I understand that a first article may be ordered at additional cost at my request. I understand that revisions, error corrections and/or preference changes after this approval will be deemed "new work" and invoiced in addition to this project's fees.

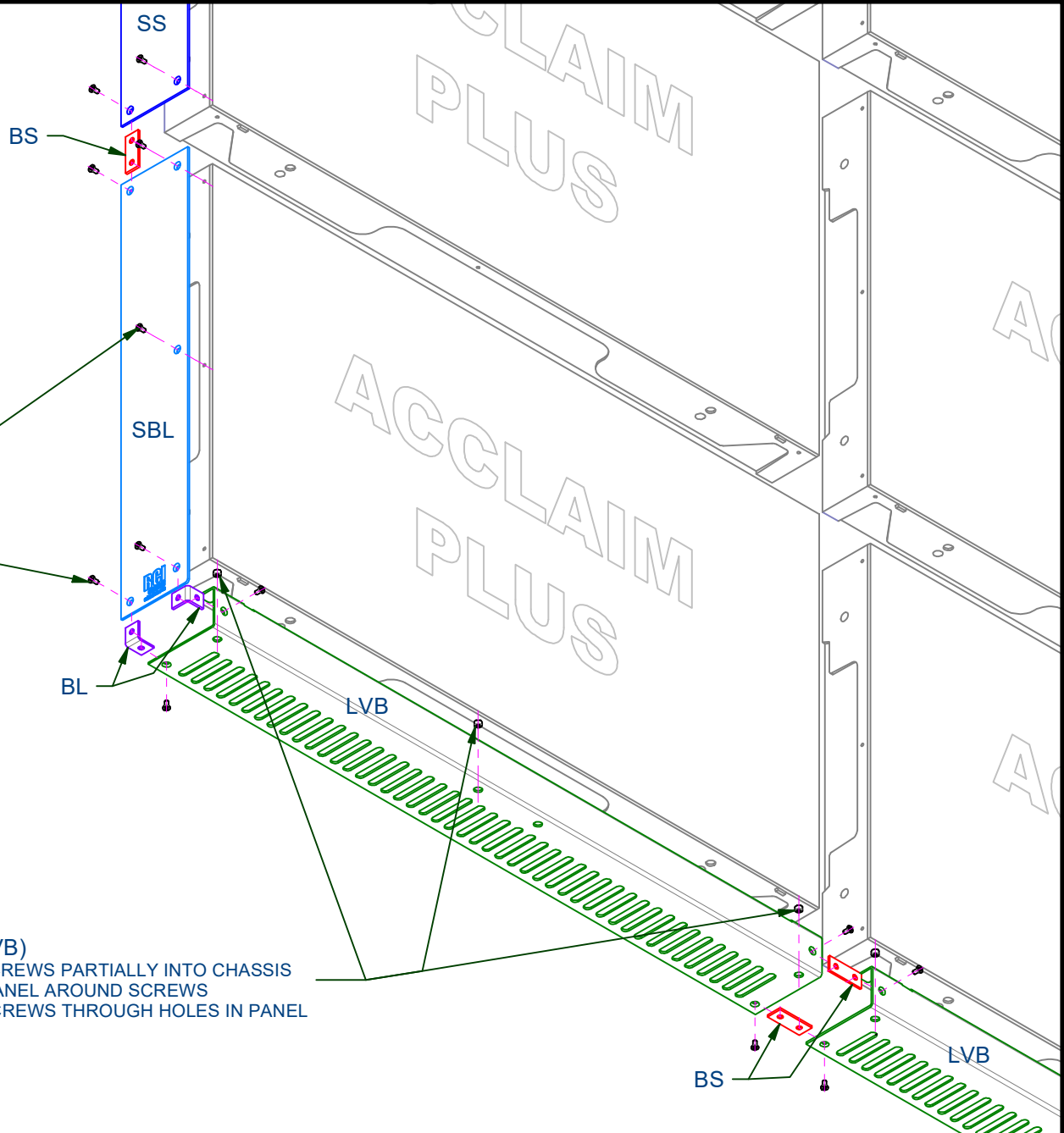
**DESIGN APPROVAL** (Please sign below and return)

By Signing you have approved the Panel and Parts as shown and Agree to RCI Terms and Conditions as posted on this document and at [www.rcicustom.com](http://www.rcicustom.com).

# LOWER CORNER ASSEMBLY DETAIL

H2  
 (2 per BL)  
 (2 per BS)  
 (2 per SBL/SBR)  
 (3 per SS)

H1 (3 per LVB)  
 1) THREAD SCREWS PARTIALLY INTO CHASSIS  
 2) SLIP LVB PANEL AROUND SCREWS  
 3) SECURE SCREWS THROUGH HOLES IN PANEL



801 North East Street  
 Suite 2A  
 Frederick, MD 21701  
 Tel: 800-546-4724  
 Fax: 800-546-6175

Customer: RCI Custom Products		Project: 3Wx3H Absen Acclaim Plus Trim Kit		RCI Part Number: RCITK-ACCLAIMPLUS-SAMPLE		Drawn By: M.D.Melin		Date: 9/22/2022	
Material: 0.062 Aluminum		Finish: Black Matte Powdercoat		Units: Inches		Revision: -		Sheet: 4 of 4	

**RCI CUSTOM PROPRIETARY STATEMENT**  
 The information contained herein is proprietary to Cervant, Inc. dba RCI Custom Products. It is to be used by the recipient solely for the purpose of the contractual performance for which it is furnished, and shall not be disclosed, in whole or in part, to any other party without the express written consent of Cervant, Inc. dba RCI Custom Products. All product and company names are trademarks™ or registered® trademarks of their respective holders. Use of them does not imply any affiliation with or endorsement by them.

**RCI CUSTOM DESIGN APPROVAL STATEMENT**  
 By signing, I agree that the design of any Panels, Parts or Artwork, digital or otherwise, has been thoroughly reviewed and approved, and I grant permission to proceed with the production process and accept responsibility for the same. It is understood that all proof reading and spell checking is the responsibility of the customer, not that of RCI Custom Products. It is understood that printed product colors may vary from what I see on my computer screen or print from my computer. I understand that a first article may be ordered at additional cost at my request. I understand that revisions, error corrections and/or preference changes after this approval will be deemed "new work" and invoiced in addition to this project's fees.

**DESIGN APPROVAL** (Please sign below and return)

By Signing you have approved the Panel and Parts as shown and Agree to RCI Terms and Conditions as posted on this document and at [www.rcicustom.com](http://www.rcicustom.com).