

### FEATURES

- Offered in 25W, 50W, 100W
- UL Listed under Standard UL813 and UL2043
- Plated steel wall plates
- Up to 5 letters of engraving included
- Offered in 7 different wall plate finishes
- 2 1/4" deep, fits standard E.O. boxes
- Matching mounting hardware included
- 3 db per step, 33db total attenuation
- Pre-wire using the convenient phoenix-style plug-in screw terminal strip
- 10 position and "off"

The RCI Custom Products **VCLT Series** 70 Volt volume controls are the choice when a project demands an attractive solution yet a rugged, high quality volume control. The extruded steel wall plate is offered in several different plated finishes. Each plate includes up to 5 letters of engraving to personalize each device. An attractive Rogan Pure Touch® knob completes the package.

All units fit in a standard depth E.O. box. Pre-wiring is easy using the phoenix-style plug-in screw terminal strip. Plugs are labeled for wiring accuracy. Conductor capacity is up to 14 gauge.

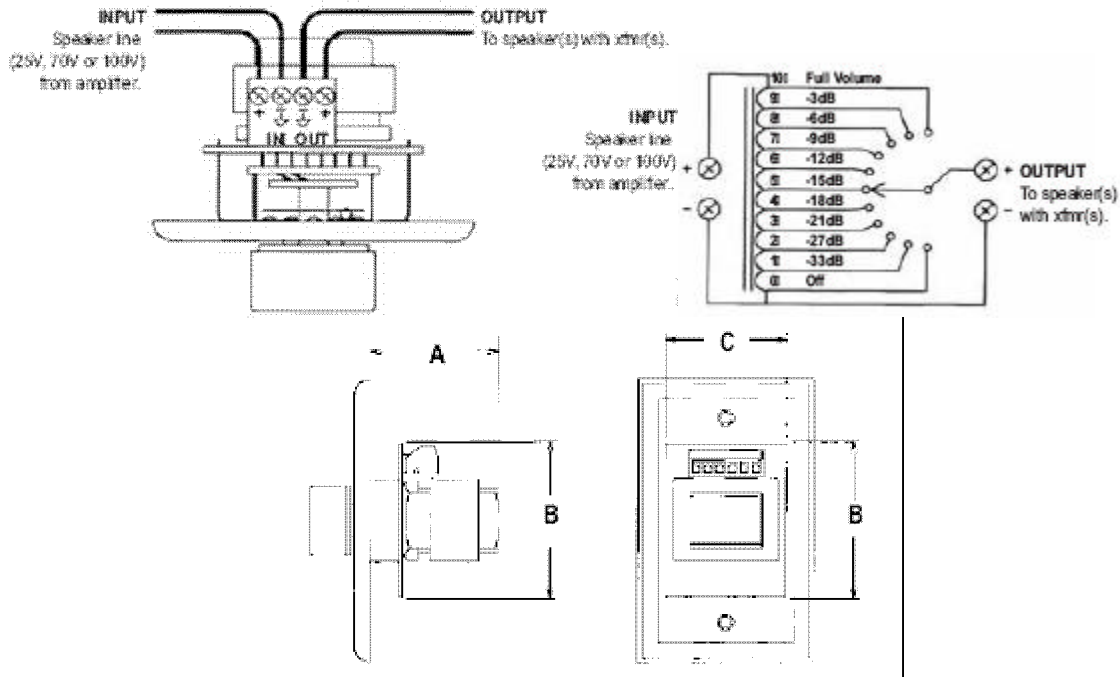
The VCLT103 Series are all attenuators mounted on a single gang wall plate, the VCLT203 Series are the same attenuators on a double gang wall plate, the VCLT204 Series include an attenuator and one 1/4" T.R.S. outlet, and the VCLT206 Series also include a four position rotary source selector switch.

### A & E SPECIFICATIONS

*Volume controls shall be the RCI Custom Products Model VCLT\_\_\_\_\_ with a power rating of \_\_\_\_\_ (25, 50, 100 watts) and attenuation per step of 3dB with one switch position for "off". The plate shall be made of extruded steel, and shall be finished in \_\_\_\_\_ (bank bronze, mirror chrome, polished brass, satin brass, stainless steel, satin bronze, antique "statuary" bronze plated finish). Units must be UL Listed under UL813 and UL 2043. The attenuator shall include a phoenix style plug-in connector for terminating. The units shall also include permanent engraved identification.*

**FINISH SELECTION:** Replace suffix "xx" with anodized finish "BZ" (Bank Bronze), "MC" (Mirror Chrome), "PB" (Polished Brass), "SB" (Satin Brass), "ST" (Stainless Steel), "SZ" (Satin Bronze), or "AZ" (Antique "Statuary" Bronze)

P/N	Description
<b>Single Gang</b>	
VCLT103-25xx	One gang, engraved plated wall plate, 25 watt, 70 volt
VCLT103-50xx	One gang, engraved plated wall plate, 50 watt, 70 volt
VCLT103-100xx	One gang, engraved plated wall plate, 100 watt, 70 volt
<b>Two Gang</b>	
VCLT203-25xx	Two gang, engraved plated wall plate, 25 watt, 70 volt
VCLT203-50xx	Two gang, engraved plated wall plate, 50 watt, 70 volt
VCLT203-100xx	Two gang, engraved plated wall plate, 100 watt, 70 volt
<b>Two Gang w/ 1/4" T.R.S.</b>	
VCLT204-25xx	Two gang, engraved plated wall plate, 25 watt, 70 volt, one TRS
VCLT204-50xx	Two gang, engraved plated wall plate, 50 watt, 70 volt, one TRS
VCLT204-100xx	Two gang, engraved plated wall plate, 100 watt, 70 volt, one TRS
<b>Two Gang, w/ 4 pos. Switch</b>	
VCLT206-25xx	Two gang, engraved plated wall plate, 25 watt, 70 volt, 4 pos. switch
VCLT206-50xx	Two gang, engraved plated wall plate, 50 watt, 70 volt, 4 pos. switch
VCLT206-100xx	Two gang, engraved plated wall plate, 100 watt, 70 volt, 4 pos. switch



Wattage Size	A	B	C
25 watt	1.75"	2.5"	1.875"
50 watt	1.812"	2.5"	1.875"
100 watt	2.125"	2.5"	1.875"