

FEATURES

- Offered in 25W, 50W, 100W
- UL Listed under Standard UL813 and UL2043
- Durable 1/8" (11 gauge) aluminum
- Anodized or Powder Coat finish
- Vertical grain
- Beveled edges, .0635 at 45 degrees
- 2 1/4" deep, fits standard E.O. boxes
- Matching mounting hardware included
- 3 db per step, 33db total attenuation
- Pre-wire using the convenient phoenix-style plug-in screw terminal strip
- 10 position and "off"

The RCI Custom Products **VCAL Series** 70 Volt volume controls are the choice when a project demands an attractive, yet a rugged, high quality volume control solution. The solid aluminum wall plate is offered in a variety of durable anodized and powder coat finishes. Each plate includes up to 5 letters of engraving to personalize each device. An attractive Rogan Pure Touch® knob completes the package.

All units fit in a standard depth E.O. box. Pre-wiring is easy using the phoenix-style plug-in screw terminal strip. Plugs are labeled for wiring accuracy. Conductor capacity is up to 14 gauge.

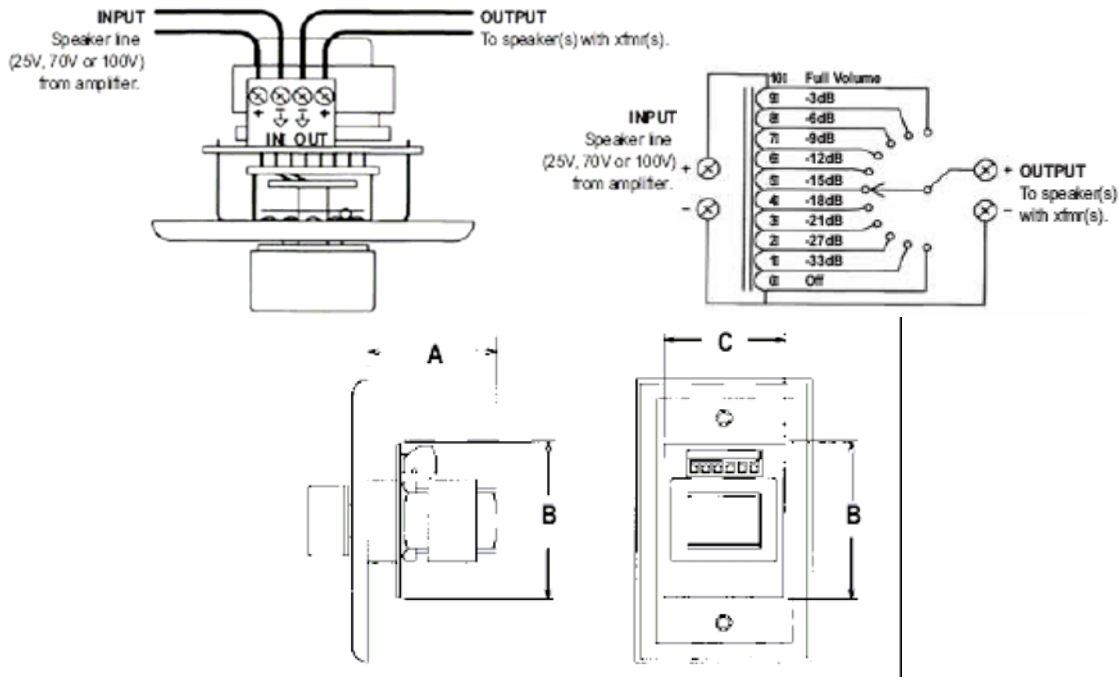
The VCAL103 Series are all attenuators mounted on a single gang wall plate, the VCAL203 Series are the same attenuators on a double gang wall plate, the VCAL204 Series include an attenuator and one 1/4" T.R.S. outlet, and the VCLT206 Series also include a four position rotary source selector switch.

A & E SPECIFICATIONS

Volume controls shall be the RCI Custom Products Model VCAL_____ with a power rating of _____ (25, 50, 100 watts) and attenuation per step of 3dB with one switch position for "off". The plate shall be made of anodized or powder coated aluminum,. Units must be UL Listed under UL813 and UL 2043. The attenuator shall include a phoenix style plug-in connector for terminating. The units shall also include permanent engraved characters.

FINISH SELECTION: Replace suffix “xx” with “BK” (Anodized Black), “CL” (Anodized Clear), “GL” (Anodized Gold), “GR” (Anodized Gray), “PBKTX” (Powder Coat Black Textured), “PW” (Powder Coat White), “PI” (Powder Coat Ivory), “PA” (Powder Coat Almond), “PDB” (Powder Coat Dark Brown), or “PLG” (Powder Coat Light Gray)

P/N	Description
Single Gang	
VCAL103-25xx	One gang, engraved plated wall plate, 25 watt, 70 volt
VCAL103-50xx	One gang, engraved plated wall plate, 50 watt, 70 volt
VCAL103-100xx	One gang, engraved plated wall plate, 100 watt, 70 volt
Two Gang	
VCAL203-25xx	Two gang, engraved plated wall plate, 25 watt, 70 volt
VCAL203-50xx	Two gang, engraved plated wall plate, 50 watt, 70 volt
VCAL203-100xx	Two gang, engraved plated wall plate, 100 watt, 70 volt
Two Gang w/ 1/4" T.R.S.	
VCAL204-25xx	Two gang, engraved plated wall plate, 25 watt, 70 volt, one TRS
VCAL204-50xx	Two gang, engraved plated wall plate, 50 watt, 70 volt, one TRS
VCAL204-100xx	Two gang, engraved plated wall plate, 100 watt, 70 volt, one TRS
Two Gang, w/ 4 pos. Switch	
VCAL206-25xx	Two gang, engraved plated wall plate, 25 watt, 70 volt, 4 pos. switch
VCAL206-50xx	Two gang, engraved plated wall plate, 50 watt, 70 volt, 4 pos. switch
VCAL206-100xx	Two gang, engraved plated wall plate, 100 watt, 70 volt, 4 pos. switch



Wattage Size	A	B	C
25 watt	1.75"	2.5"	1.875"
50 watt	1.812"	2.5"	1.875"
100 watt	2.125"	2.5"	1.875"